



# CML International Brochure

Complete Project  
Commissioning &  
Handover Solutions

# Table of Contents

	Section
Introduction	1
Staff	2
Organisation Chart	3
Services Provided	4
Commissioning Management	5
Commissioning Management Project History	6
Commissioning Verification	7
Commissioning Verification Project History	8
HVAC Testing & Balancing	9
HVAC Testing & Balancing Project History	10
Electrical Testing & Commissioning & Project History	11
Surveys & Troubleshooting	12
Surveys & Troubleshooting Project History	13
Thermographic Surveys & Project History	14
Documentation Management & Production Solutions	15
Documentation Management and O&M Project History	16
CML International Clients List	17
Affiliates	18
Prequalification Data	19
Management	20
References	21



MARKET LEADERS  
IN COMMISSIONING  
MANAGEMENT SERVICES



CML TECHNIQUES  
Web Based Management  
Systems  
[www.cmltechniques.com](http://www.cmltechniques.com)



CML INTERNATIONAL  
WEB SITE  
[www.cmlinternational.net](http://www.cmlinternational.net)

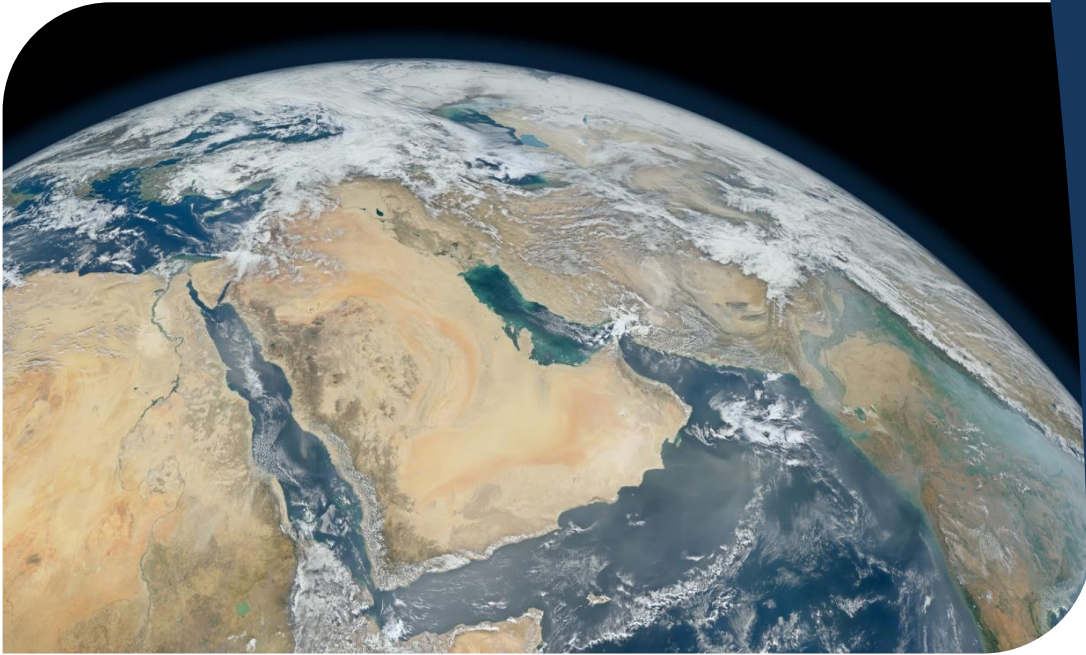
# 1. INTRODUCTION

In 1994, the Directors of Commissioning Management Limited, one of the UK's leading commissioning specialists founded in 1983, recognized the need for an experienced, independent commissioning management company to operate from the Gulf States. From their previous experience of the Middle East they based their new company (registered as Tripoli Air Conditioning Services) in Dubai.

Following a management buy-out in 1999, the company became independent from their UK parent and the registered name was changed to CML International (Dubai) L.L.C.



The Burj Al Arab & Jumeirah Beach Hotel, two of CML's first projects in the UAE.



Since its inception, the company has carried out Commissioning Management, Hands-on HVAC Testing and Balancing, Electrical Testing and Commissioning, Testing and Commissioning Supervision, Survey Works and Documentation Management for many of the major Clients, Developers, Consulting Engineers, Project Managers and Contractors in the United Arab Emirates and the Middle East.

CML are at the forefront in their field and can produce bespoke commissioning and handover procedures for any type of project. With ever increasing complexities in building services, systems and the drive to be ever more efficient, the services CML offer are not just a nice to have, but a necessity.

CML are able to provide copies of their Code of Conduct, Health, Safety & Environmental, Quality Assurance and Sustainability Policies upon request.

## 2. STAFF

CML are able to build from their permanent locally based expatriate staff, to provide a complete economical specialist commissioning service for all types, sizes and complexities of building engineering systems.



Aside from HVAC and electrical systems, within our project teams exists specialist expertise in BMS, ELV, refrigeration, combustion, acoustics and communications etc., enabling complete coordination of all aspects of building engineering services commissioning.

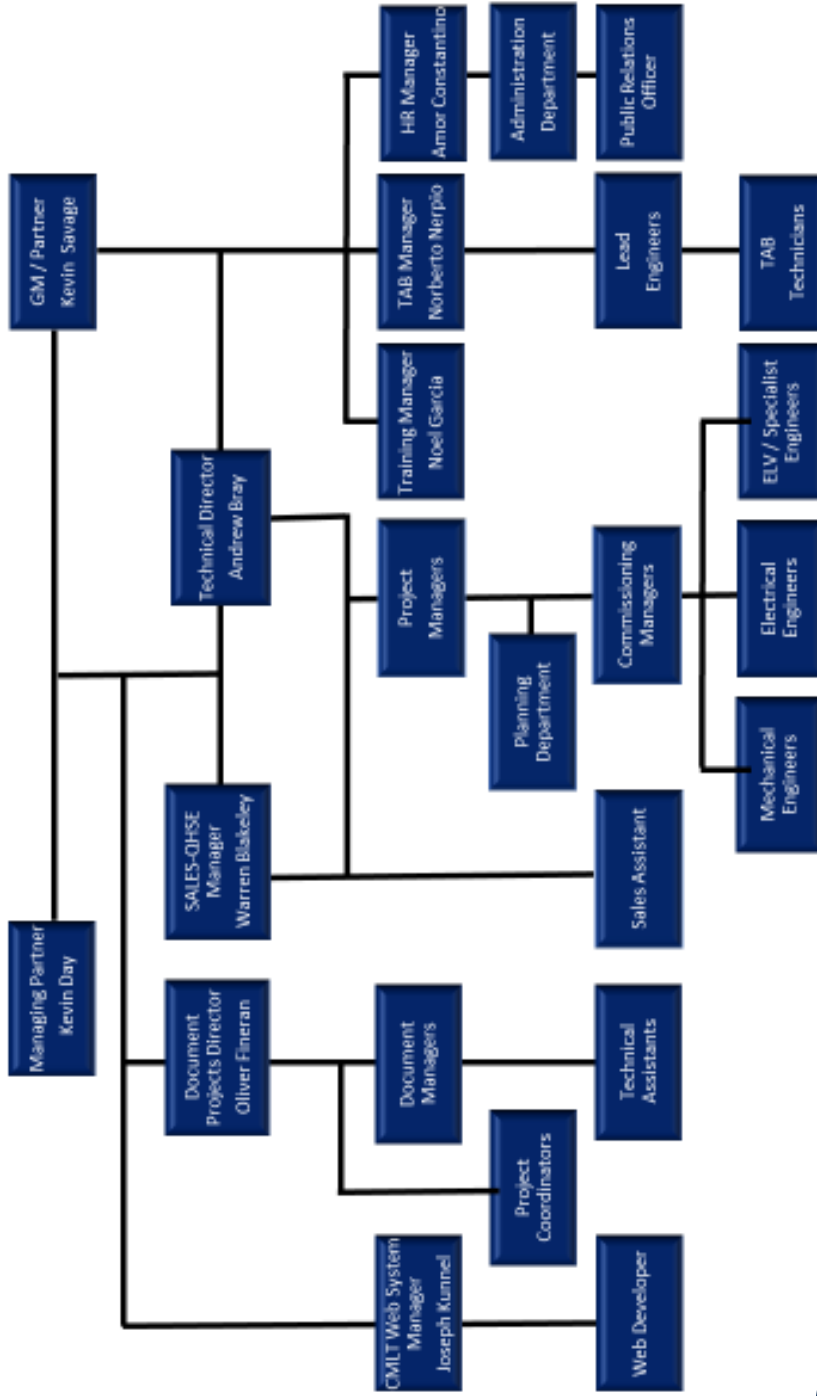
CML currently has over 250 personnel comprising of the following:

- Partners
- Projects Directors
- HSE/QA Managers
- Training Managers
- PRO
- Head Office Administration
- Project Managers
- TAB Managers
- Lead Engineers
- Mechanical Engineers
- Electrical Engineers - ELV/Specialist Engineers
- TAB Technicians
- Document Managers
- Technical Assistants / Authors
- Documentation / Project Coordinators

CML has the flexibility to meet the exact requirements of their Clients for any type of project.

# 3. CML INTERNATIONAL ORGANISATION CHART

## CML INTERNATIONAL ORGANISATION CHART



## 4. SERVICES PROVIDED

CML are able to provide commissioning expertise to contractors, designers, project managers and building end-users in various capacities including:

- Commissioning Management
- LEED / ESTIDAMA / DGBR Commissioning Authority / Agent
- Commissioning Verification
- Hands-on HVAC Testing & Commissioning
- LV Electrical Testing & Commissioning
- Co-ordination of Client's Facilities Personnel
- Electrical and Mechanical Surveys
- Thermographic Surveys
- Electrical and Mechanical Troubleshooting
- Witnessing & Verification
- Documentation Management
- O&M Manual Production





All Testing and Commissioning services are provided in accordance with CIBSE, ASHRAE and ANSI Commissioning Codes as applicable, as well as BSRIA, CSA, IEE, and AABC Guidelines and relevant ISO and British Standards.



## 5. COMMISSIONING MANAGEMENT

It has long been recognised that the initiation and implementation of formal commissioning management protocols and systems is vital to the success of any project and is a requirement for LEED®, Estidama, and DGBR Certification.

CML are able to provide a complete Commissioning Management service, which includes:

- Commissioning Authority/Agent services for Green Building Rating Systems such as LEED, Estidama and DGBR etc.
- Review/assistance in production of OPR and BOD.
- Commissionability Appraisals of design and installation drawings.
- Commissioning Plan production.
- Commissioning Programme production and management.
- Production and management of Commissioning Activity Schedule databases.
- Co-ordination/review of site & service specific Commissioning Method Statements.
- Technical Submittal reviews.
- MEP installation monitoring and reporting.
- Factory Acceptance Testing.
- Production and management of Integrated Systems Testing Plans.
- Pre-commissioning/Commissioning Management, witnessing and verification of all building services & systems.
- Co-ordination of Client/Statutory demonstration.
- Deficiency and Non-conformance Strategies & reporting.
- O&M Manual reviews.
- Test Documentation collation.
- Client Training co-ordination (Including production/management of Client Training Proposals & Manuals).
- Production of Monthly & Final/Handover Commissioning Status Reports.
- Seasonal, deferred testing & post completion reviews.
- Systems Manual production.
- M&V Plans Production.

CML utilise the latest software systems to monitor and report on all progress issues related to the installation, commissioning and handover works.

# 6. COMMISSIONING MANAGEMENT PROJECT HISTORY

A selection of our Commissioning Management Projects Include:

- Aldar Headquarters, Al Raha Beach (LEED®)
- Abu Dhabi Islamic Bank HQ (LEED®)
- Abu Dhabi Plaza (Kazakhstan)
- Address Sky View, Dubai
- Address Fountain Views, Dubai
- ADNOC Borouge, Abu Dhabi
- Ain Dubai, Dubai
- Almaza City Center, Cairo (LEED®)
- Al Bahr Towers, Abu Dhabi
- Al Muneera, Al Raha Beach, Abu Dhabi
- Al Wajba Palace Complex, Doha
- Al Zeina, Al Raha Beach, Abu Dhabi
- Al Zahia City Centre, Sharjah
- Barr Al Jissah Resort, Muscat (Shangri-la)
- Bee'ah Headquarters, Sharjah
- Beirut City Centre, Lebanon
- Burj Khalifa
- Burj Dubai District Cooling Plants S02 & S03
- Business Bay Executive Towers (11 towers)
- Capital Gate Tower, Abu Dhabi
- Chicago Beach Resort Development (Burj Al Arab & Jumeirah Beach)
- Cleveland Clinic Abu Dhabi (LEED®)
- Doha City Centre Phase 2
- Dubai Festival City Zone 8A & 8B
- Dubai International Airport - Concourse 1 & 2, & Terminal 3
- Dubai International Financial Centre Lighthouse (LEED®)
- Dubai Mall
- Dubai Marina (7 towers)
- Dubai Metro, Red Line Depots & Car Parks
- DWTC, Convention Centre, Expo 2020
- Fakeeh University Hospital , Dubai
- Fujairah City Centre
- Grand Hyatt Hotel, Kuwait
- Holy Mosque in Makkah Expansion
- Jumeirah Beach Residence Sectors 01, 02, 03 & 07 (19 towers)
- King Abdulaziz Centre for World Culture, Dhahran
- King Abdulaziz International Airport, Jeddah
- King Faisal Specialist Hospital, Riyadh
- King Hamad General Hospital, Bahrain
- Louvre, Abu Dhabi
- Mall of Egypt, Cairo (LEED®)
- Mall of Oman (LEED®)
- Masdar City, MIST 1A
- Masdar City, MIST 1B
- Masdar City, Project 1 Phase A
- Motor City - Zones 1, 2 & Automall
- Muscat International Airport, Phase 2
- National Bank of Dubai
- National Gymnastics Arena, Baku
- Oman Convention & Exhibition Centre, Package 2
- Opera House Downtown Dubai
- Paris Sorbonne University, Abu Dhabi
- Park Hyatt Hotel, Saadiyat Island, Abu Dhabi
- Presidential Palace, Abu Dhabi Hotel)

## **A selection of our Commissioning Management Projects Include:**

- Qatar Convention Centre
- Qatar Convention Centre Extension
- Queen Alia International Airport, Jordan – Phase 1 & 2
- Rixos Ottoman Palace (LEED®)
- Saadiyat Beach Apartments, Abu Dhabi
- Salalah Airport MC5, Oman
- Shangri-la, Sheikh Zayed Road, Dubai
- Sheraton Hotel, Oman
- Sheraton Hotel Renovation, Doha
- Sidra Hospital, Qatar
- St Regis Resort, Saadiyat Island, Abu Dhabi
- Tiara Residences, Dubai
- The Index Building – DIFC Plot No. CP-04, Dubai
- The Royal Atlantis Residence & Resorts, Dubai
- The W Hotel & Residence , Dubai
- Waldorf Astoria, Ras Al Khaimah
- Westin Hotel, Abu Dhabi Golf Club
- World Trade Centre, Abu Dhabi
- World Trade Centre, Bahrain
- Yahsat Satellite Ground Station, Abu Dhabi
- Yas Island—F1 Race Track
- Yas Island—Marina Hotel (Viceroy )
- Zayed National Museum , Abu Dhabi

## 7. COMMISSIONING VERIFICATION

Utilising our expertise and experience in both Hands-on Testing and Balancing and Commissioning Management, we are able to offer a complete Commissioning Verification service which includes:-

- Commissionability Studies
- Review of Commissioning Programmes
- Review of Commissioning Method Statements
- Witnessing of Static Testing
- Witnessing of Pre-commissioning
- Witnessing of Functional Testing and Commissioning
- Witnessing of Integrated Systems Testing
- Thermal Imagery
- Review of Testing and Commissioning Results
- Test Report Collation



**The verification role is vital for design and build projects where it is necessary for Clients to have a 3rd Party specialist involved throughout the commissioning & handover of systems/projects to ensure conformity with local and international standards.**

# 8. COMMISSIONING VERIFICATION PROJECT HISTORY

A selection of our Commissioning Verification Projects

**Include:**

- Abu Dhabi Industrial City – District Cooling
- ADNEC - Aloft Hotel
- ADNOC HQ
- ADPICO Pipe Factory
- Al Thani Tower
- Burj Dubai District Cooling Plant – 1
- Burj Dubai Lake Hotel
- Burj Dubai Manzil Hotel
- Burj Dubai Old Town Commercial Island Hotel
- Burj Dubai Residences
- Burj Dubai Residences 2
- Burj Dubai Southridge
- Burj Dubai Quarmardin Hotel
- District Cooling Abu Dhabi
- Dubai Marina 7WX
- Emirates Palace Hotel Package 8 Central
- Emirates Towers – Chillers Witness
- Emirates Palace Hotel Package 9 & 9A
- Emirates Palace Hotel Package 10/10A
- Old Town Phase 2
- Qasar Al Sarab Desert Resort
- Queen Alia International Airport, Jordan
- Sheikh Zayed Road – District Cooling
- Souk Madinat (fit-out) Fire Life & Safety
- The Conference Palace Hotel (Emirates Palace)
- Tabreed 2 & 3 Chilled Water Commissioning
- Uptown Mirdif
- Zayed Military City Tabreed T2 & T3 District Cooling Plants





## 9. HVAC TESTING & BALANCING

CML have a well-established team of Specialist Technicians who are dedicated to Hands-on Testing, Adjusting and Balancing (TAB) of HVAC Systems including, but not limited to:-

- Low Velocity Air Systems
- Variable Air Volume Systems
- Specialist exhaust air systems
- Staircase/lift/lobby pressurisation
- Smoke Control Systems
- Air handling units
- Chilled water and LTHW systems (constant & variable flow)
- Condenser water systems
- AHU/coil performance tests
- Heat exchanger performance tests
- Sound level measurement
- Vibration Level Tests
- Environmental Tests

Our technicians, the majority of which are diploma / degree holders, are given thorough formal in-house training based on the UK Commissioning Specialist Associations procedure manuals, as well as undertaking thorough on-site training.

# 10. HVAC TESTING & BALANCING PROJECT HISTORY

## A selection of our HVAC TAB Projects Include:

- ADCO, Abu Dhabi
- ADIA New Headquarters Facility
- ADNOC Boruge, Abu Dhabi
- Al Jazeera Hospital, Abu Dhabi
- Amiri Flight, Abu Dhabi
- Al Salam Tower
- Al Zeina, Abu Dhabi
- Barr Al Jissah - Resort & Spa (3 hotels & infrastructure)
- Burj Khalifa
- Business Park Phase 1 & 2 Burj Dubai
- Cleveland Clinic, Abu Dhabi
- College of Information Technology Project - Al Ain
- Deira City Centre 2nd Floor
- District Healthcare City - District Cooling
- Dubai International Airport TD 48
- Dubai International Airport AX102 Cargo Mega Terminal
- Dubai Marina – 7WX
- Dubai Mall
- Downtown Jebel Ali Zone 1, Block 2
- Dutco Group HQ
- Dubai World Trade Centre, Exhibition Halls
- Dubai 2000 Air Show
- Emirates Towers Boulevard
- Grand Mosque - Muscat
- Green Community Lake – Lake Apartments
- Gulf News Extension
- Hyatt Regency - Muscat
- Hotel Intercontinental - Doha
- Ibis & Novotel Hotels
- Jumeirah Beach Residence - 01
- Jumeirah Beach Residence 03
- Jumeirah Beach Residence - 07
- King Abdulaziz International Airport - KSA
- Le Mirage Beach Resort
- Limitless Office Extension
- MTTC Lighthouse - KSA
- Nad Al Sheba Palace
- Old Phase 2 - Burj Dubai
- Perth Hospital, Western Australia
- Presidential Palace, Abu Dhabi
- Qanat Quatier, Qatar
- Qatar Convention Centre Extension
- Queen Alia International Airport, Jordan
- RAK Bank - RAK
- RAK Bank - Silicon Oasis
- Residences 3 - Burj Dubai
- Shangri-La Hotel, Dubai
- Shuweihat Power & Water Project
- Student Housing, Qatar
- The Tower - Sheikh Zayed Road
- Wafi Residences
- Wafi City, Mall Extension
- Wafi City Phase 4 Extension
- Wild Wadi Aqua Park
- World Trade Centre, Abu Dhabi
- Yas Island F1 Facility Buildings
- Zabeel Palace Refurbishment
- Zulfuf GOSP 1 - KSA

# 11. ELECTRICAL TESTING & COMMISSIONING

CML have the expertise and a team of specialist electrical technicians who perform cold and live testing of electrical services to the IEE Regulations 18<sup>th</sup> Edition Standards including:

- LV Distribution
- Main Distribution Boards
- Sub-main Distribution Boards
- Motor Control Centres
- Distribution Boards





## **ELECTRICAL TESTING PROJECT HISTORY**

- ADNOC Borouge, Abu Dhabi
- Dubai Mall
- Burj Dubai District Cooling Plant 02
- Burj Dubai District Cooling Plant 03
- Souq Madinat Jumeirah
- The Royal Spa
- Al Sama Tower, Abu Dhabi
- Park Hyatt Hotel, Saadiyat Island, Abu Dhabi
- Gulf News Printing Plant, Dubai
- Qasar Al Sarab, Abu Dhabi
- Al Falah Villas, Abu Dhabi
- St Regis, Saadiyat Island, Abu Dhabi
- Sahara Centre, Sharjah
- King Hamad General Hospital, Bahrain
- Qatar Learning Centre

## 12. SURVEYS & TROUBLESHOOTING

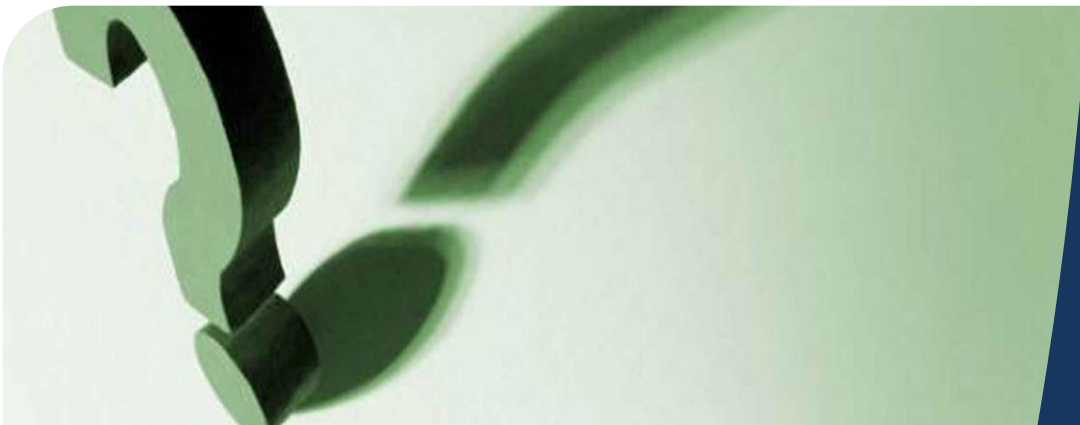
Building engineering services/systems, invariably lose peak efficiency over time or become difficult to control due to inefficient maintenance, or possibly due to modifications on systems, fabric or occupancy since installation. In some cases buildings may not have been commissioned correctly in the first place. All these factors will not only increase operational costs for building owners or operators but may cause damage to the building fabric and harm a landlord's reputation if his tenants are not satisfied.

CML are able to carry out surveys of existing installations to enable building engineering services plant to be returned to peak efficiency either after fitting out or on a regular basis, including:-

- Environmental Conditions
- Mechanical Plant and Systems
- Electrical Plant and Systems
- Life Safety Systems
- ELV and Specialist Controls Systems
- Thermal Imagery

CML also conduct complete Condition Surveys of existing MEP Installations.

**CML are also able to provide the retro-commissioning services required under LEED® For Existing Buildings**



# 13. SURVEYS & TROUBLESHOOTING PROJECT HISTORY

- Al Bustan Complex, Abu Dhabi
- Al Futtaim Head Office
- Al Kazim Villas - Noise Survey
- API World Tower - VAC Survey
- A22A Dubai Marina - Noise Survey
- Dubai Airwing - VAC Survey
- Dubal Field Services
- Dubai International Airport TD72 - VAC Survey
- Dubai Mall - Complete Building Services Review
- Dubai Marina Phase 1 - VAC Survey
- Emirates Training Centre - Troubleshooting
- Emirates Towers - Chillers Survey
- Emirates Towers - Chilled Water System Survey
- Japengo Restaurant - Ventilation Survey
- Jumeirah Villa - Building Services Survey
- Khansaheb G+8 Building - VAC Survey
- Marina Mansions - Noise Survey
- Mashraq Bank, Satwa - VAC Survey
- Murray & Roberts H/O - VAC Survey
- The Greens A/C Survey
- Pearl Diving Pool, Dubai - Condition Survey



# 14. THERMOGRAPHIC SURVEYS

Ensuring the safe operation of electrical installations and equipment is one of our main priorities and we recommend and perform thermographic surveys on installations such as:-

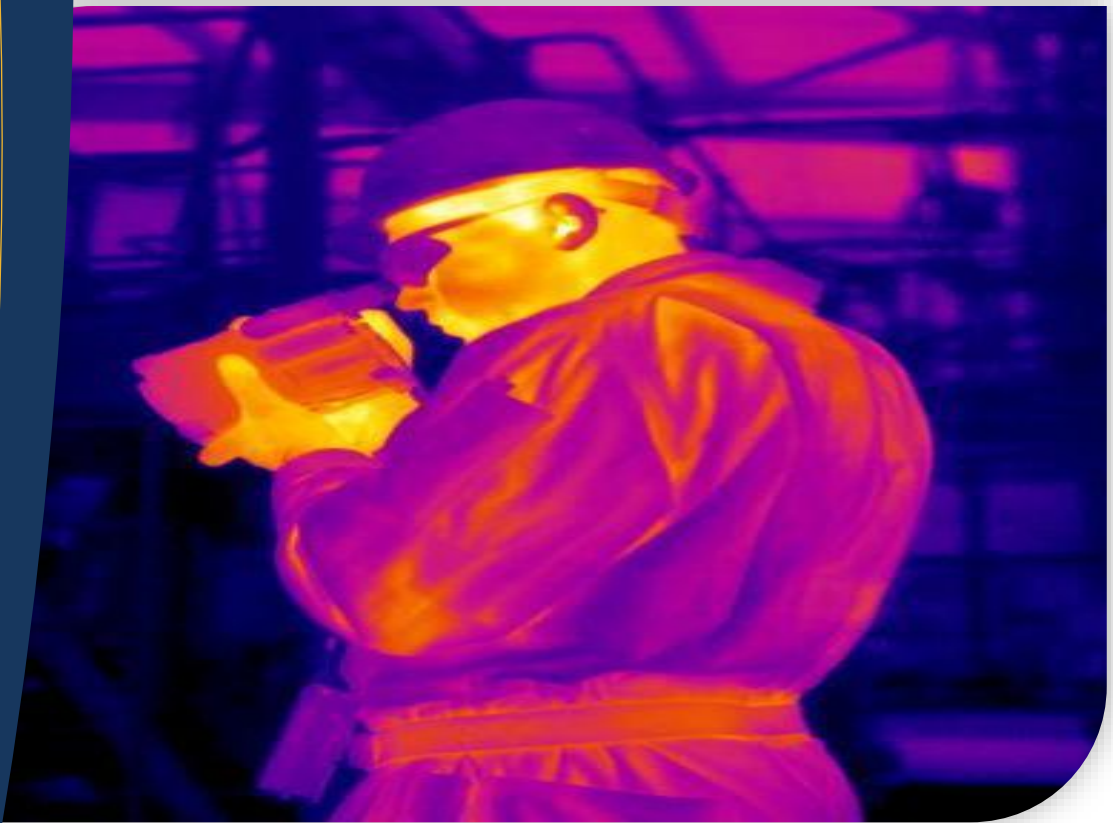
- Bus Ducts
- All Boards, MCC Etc.
- Motors
- Motor / Pump Bearings

**CML are also able to carry out thermographic surveys of building fabric including building envelopes to verify insulation, air leakage, etc**



# THERMOGRAPHIC SURVEYS PROJECT HISTORY

- Beirut Tunnel
- Dubai Festival City Zone 8A
- Dubai Mall
- Jumeirah Beach Residences Sector 01
- Jumeirah Beach Residences Sector 07
- Wafi Phase 4 – Thermographic Survey



## 15. DOCUMENTATION MANAGEMENT & PRODUCTION SOLUTIONS

CML Techniques Plus (CMLT+) undertakes the Management and Production of high quality, cost effective printable and digital Operation and Maintenance Manuals, Training Manuals and Project Dossiers for projects of all sizes throughout the region. CMLT+ provides expertise from their locally based expatriate staff to carry out technical authoring and documentation management of all forms of handover documentation covering:

- Mechanical Services
- Electrical Services
- ELV Systems
- Public Health
- Specialist Systems
- Building Fabric
- Civil Works

CMLT+ is able to provide complete suites of Documentation by either:

- Authoring and compiling the manuals in-house.
- Issuing the Contractors, Sub-contractors or Specialists with project templates and ensuring a thorough review process to ensure the Manuals are to the required standards for issuing to the Project Team.
- Delivery of Manuals to the Client/Project Team can be in various formats including:-
  - Web-based.
  - Traditional hard copies.
  - Searchable DVD Rom.
  - Download of documentation onto client's intranet.
- A bespoke web-based system, CMLT+ allows clients/project team to view and review all manuals and hand over documentation in a user-friendly paperless environment.
- CMLT+ is also able to manage and produce other documentation, including, Client Training Manuals.



# 16. DOCUMENTATION MANAGEMENT & O&M PROJECT HISTORY

A selection of our **DOCUMENTATION MANAGEMENT & O&M PROJECT** Include:

- Abu Dhabi Plaza, Kazakhstan  
**O&M Manuals & Techniques**
- ADNOC Borouge, UAE  
**O&M Manuals & Techniques**
- Al Sadd Development Complex, Qatar  
**O&M Manuals & Techniques**
- Al Salam Tunnel, UAE  
**O&M Manuals**
- Arcapita, Bahrain  
**O&M Manuals**
- Business Bay, Cooling Plants, UAE  
**O&M Manuals**
- Beirut City Centre, Lebanon  
**O&M Manuals & Techniques**
- Burj Dubai Plots 29 & 30, UAE  
**O&M Manuals & Techniques**
- Burj Khalifa, UAE  
**O&M Manuals & Techniques**
- City Walk, Phase II, UAE  
**O&M Manuals & Techniques**
- Cleveland Clinic, UAE  
**O&M Manuals**
- Doha International Airport, Qatar  
**O&M & Training Manuals**
- Doha City Centre III, Qatar  
**O&M Manuals**
- Dubai International Airport, UAE  
**O&M Manuals**
- Dubai Festival City  
**O&M Manuals**
- Emirates Engineering Hangers, UAE  
**O&M Manuals & Techniques**
- Four Seasons, UAE  
**O&M Manuals & Techniques**
- King Hamad Hospital, Bahrain  
**O&M Manuals**
- MACAIR, UAE  
**O&M Manuals**
- Masdar, UAE  
**O&M Manuals**
- Muscat International Airport MC1, Oman  
**O&M & Training Manuals**
- Muscat International Airport MC2, Oman  
**O&M & Training Manuals, Handover Dossier, & Techniques**
- Muscat International Airport MC12, Oman  
**O&M Manuals, Handover Dossier, & Techniques**
- National Bank of Oman, Oman  
**O&M & Training Manuals, Handover Dossier, & Techniques**
- Opera House Downtown Dubai, UAE  
**O&M Manuals & Techniques**
- Paris-Sorbonne University, UAE  
**O&M Manuals**
- Salalah International Airport MC5, Oman  
**O&M & Training Manuals, & Techniques**
- Sir Bani Yas Island Stables, UAE  
**O&M Manuals**
- Waldorf Astoria, UAE  
**O&M Manuals**
- Sheraton Hotel, Qatar  
**O&M Manuals & Techniques**
- Sheraton Park, Qatar  
**O&M & Training Manuals, & Techniques**
- Qatar National Convention Centre, Qatar  
**O&M Manuals, Handover Dossier, & Techniques**
- Qatar Student Housing, Qatar  
**O&M Manuals**
- Queen Alia International Airport Phase 1, Jordan  
**O&M & Training Manuals, & Techniques**
- Queen Alia International Airport Phase 2, Jordan  
**O&M Manuals & Techniques**
- Qatar Petroleum Research & Technology Centre, Qatar  
**O&M Manuals, Handover Dossier, & Techniques**
- Qatar Foundation Research & Technology Centre, Qatar  
**O&M Manuals & Techniques**
- Western Green Spine, Qatar  
**O&M Manuals & Techniques**
- Tala Residence, Qatar  
**O&M Manuals**

# 17. CML INTERNATIONAL CLIENTS LIST

## A selection of our Clients include:-

- A&P Paraskevaides & Partners
- Abu Dhabi Islamic Bank
- ADDAR
- ADNEC
- Aedas
- Airmech
- Al Bustan
- Aldar
- Alec
- Al Fara'a Group
- Al Futtaim Engineering
- Al Futtaim Tarmac
- Al Futtaim Carillion
- Al Habtoor
- Al Hamed Enterprises
- Al Jaber LEGT Engineering & Contracting (ALEC) LLC
- Al Naboodah Laing
- Al Shirawi
- Al Wasl Properties
- AMBB
- Arabtec
- Badri & Bensouda
- Bilt Middle East
- BK Gulf
- Bovis Lend Lease
- Conspel Emirates
- Carillion
- Danto Rogeat
- Diar Consult
- Diplomat
- Drake & Scull International
- Dubai Chamber of Commerce
- Dubai Civil Aviation
- Dubai Civil Engineering
- Dubai Municipality
- Dubai World Trade Centre
- Eastern International LLC
- Emaar
- Emirates emi
- Emirates Contracting Co.
- Emirates Trading Agency
- Fitra International
- Forte Grand, Abu Dhabi
- FNC
- GECO
- GMAMCO
- Green Technologies FZCO
- Gulf Energy Systems
- Habtoor Leighton Group
- Hilton International LLC
- Hyundai Engineering and Construction
- Ideal Technical Services
- International Electro-Mechanical
- ISG JV
- Itinera Ghantoot JV
- KEO International
- Kharafi National
- Kennedy & Donkin
- Juma Al Majid
- Jumeirah International
- JT Metro JV
- Khansaheb
- Laing Abu Dhabi
- Laing – CRC Joint Venture, Cairo
- Laing Emirates
- Lunar Drake Scull
- Mace
- Majid Al Futtaim
- Masdar
- Meraas Group
- Mirage Leisure & Development
- MKM Commercial Services Co.
- Murray & Roberts
- Norr Consultants
- Power Transmissions Gulf
- Reliance Electro Mechanical Co.
- RMJM
- Royal Abjar Hotel
- Royal Atlantis
- RW Armstrong
- Saleh Constructions
- Sanjose Fibrex JV
- Scientech
- Sensaire Services
- Six Construct
- Special Projects Office, Doha
- Stork Engineers & Contractors
- Tabreed
- Taisei
- Tarmac Emirates
- TCA JV
- TDIC
- The Client's Office
- The Engineer's Office
- Thermo LLC
- Trans Emirates Contracting
- Trans Gulf
- Turner Construction International
- Verger & Delporte
- Voltas International
- Wafi City
- Welcare Hospital
- White Young Qatar
- W.S. Atkins & Partners Overseas
- Zabeel Investments
- Zenner Steward
- Zubair Kilpatrick - Oman

## 18. AFFILIATES



**The American Society of Heating, Refrigerating and Air-Conditioning Engineers**

"Advances technology to serve humanity and promote a sustainable world."



**The Building Services Research and Information Association;**

"BSRIA's engineering, technical and market research experts provide independent, objective and practical help in design, construction and occupancy of the built environment."



**The Commissioning Specialists Association;**

"The CSA is at the fore- front of career development and training for the Building Services, Commissioning and HVAC industries."



**The Chartered Institution of Building Services Engineers;**

"Support the Science, Art and Practice of building services engineering, by providing our members and the public with first class information and education services and promoting the spirit of fellowship which guides our work."



**The Chartered Institute of Building;**

“CIOB members are skilled managers and professionals with a common commitment to achieving and maintaining the highest possible standards.”



**The LEED® (Leadership in Energy & Environmental Design) Green Building Rating System A division of the USGBC;**

The nationally accepted benchmark for design, construction and operation of high-performance green buildings.

The U.S. Green Building Council’s mission is;

“To transform the way buildings and communities are designed, built and operated, enabling an environmentally and socially responsible, healthy, and prosperous environment that improves the quality of life”.



**ISO 9001:2015 ,ISO 14001:2015 & ISO 45001:2018**

The internationally recognised standard for the quality and environmental management of businesses.

These Standards indicate that CML’s business has a quality management system in place which is subject to independent external audit by an accredited certification body.

# 19. PREQUALIFICATION DATA

CML is an independent building services commissioning and Commissioning Management Consultancy company.

Our registered offices are located at:

CML International (Dubai) L.L.C  
Office 308-312, IT Plaza,  
Dubai Silicon Oasis,  
Dubai, UAE  
PO Box: 341169  
Tel: +971 4 3261116  
Fax: +971 4 3261117  
Email: [admin@cmlgroup.ae](mailto:admin@cmlgroup.ae)

CML International Qatar LLC  
18 Floor, Office 88,  
Al Reem Tower, West Bay,  
Qatar,  
PO Box: 19530  
Tel: +974 4411 5453  
Fax: +974 4411 5453  
Email: [cmlgroup@emirates.net.ae](mailto:cmlgroup@emirates.net.ae)

CML International (Oman)  
P.C. 103,  
Bareeq Al Shatii,  
Sultanate of Oman,  
PO Box: 136  
Tel: +968 9357 4821  
Fax: +968 2450 2304  
Email: [andrew.bray@cmlgroup.ae](mailto:andrew.bray@cmlgroup.ae)

CML International (Kazakhstan)  
Office 303, 3<sup>rd</sup> Floor,  
6<sup>th</sup> Saryarka Avenue, Saryarka District,  
010000, Astana City  
Republic of Kazakhstan  
Tel: +7 7172 990 440  
Fax: +7 7172 990 449  
Email: [admin@cmlgroup.ae](mailto:admin@cmlgroup.ae)

CML International (Saudi)  
Office No 16 14322 – 3728, 8617 – Al Sulay District,  
Istanbul Street Riyadh KSA  
Tel: +966 5400 53602  
Email: [mark.Hallewell@cmlgroup.ae](mailto:mark.Hallewell@cmlgroup.ae)

CML are ISO 9001:2015 Quality Management certified  
(Cert No. AE100000097/01/Q20)

CML are ISO 14001:2015 Environmental Management  
certified  
(Cert No. AE100000097/02/Q20)

CML are ISO 45001:2018 Occupational Health & safety  
Management certified  
(Cert No. AE100000097/03/H20)

## Trade License

We hold Dubai trade license No. 128961. Our local agent / sponsor is Links Regional Commercial Brokers L.L.C.

We hold Abu Dhabi trade license No. CN-2676825. Our local agent / sponsor is Links Regional Commercial Brokers L.L.C.

## The Company is managed by:

Kevin Day – Managing Partner  
Kevin Savage – Partner / Group General Manager

## 20. MANAGEMENT

### Staffing

Our entire technical staff hold UAE residence visas and work permits and are from the United Kingdom, Middle East and Far East regions.

### Safety Record

We have had no reportable accidents within the last 25 years.

### Banking

Our bankers are HSBC Bank Middle East, Bur Dubai  
Account number: 020 208401 001

### Insurance Details

We are insured with Union Insurance Company PSC

### Professional Indemnity:

Policy No. CDPII2015000643/0006

Limit of Indemnity: USD 5,000,000 / AED 18,400,000

### General Liability:

Policy No. CDPLI2016000152/0005

Limit of Indemnity: USD 2,000,000 / AED 7,360,000

### Workmen's Compensation:

Policy No. CDWCP2016000151/0005

Liability: In accordance with UAE Federal Law

### Employers Liability:

Policy No. CDELI2018000236/0003

Limit of Liability: USD 2,000,000 / AED 7,360,000

## 21. REFERENCES

**Patrick Bell**

Senior Director – Development  
Diriyah Gate Development Authority  
+966 920 002622  
patrick.bell@dgda.gov.sa

**Mohamed Elsayed**

Senior Commissioning Manager  
Qatar Foundation  
+974 3392 1946  
moelsayed@qf.org.qa

**Mohammed Al Marzouqi**

Director – MEP, Projects  
Emaar Properties PJSC  
+971 4 3673333  
Malmarzouqi@emaar.ae





CML International (Dubai) L.L.C  
Office 308-310, IT Plaza,  
Dubai Silicon Oasis, Dubai, UAE,  
PO Box: 341169  
Tel: +971 4 3261116  
Fax: +971 4 3261117  
Email: [admin@cmlgroup.ae](mailto:admin@cmlgroup.ae)  
<http://www.cmlinternational.net>

CML International L.L.C (Oman)  
P.C. 103,  
Bareeq Al Shatii,  
Sultanate of Oman,  
PO Box: 136  
Tel: +968 9357 4821  
Fax: +968 2450 2304  
Email: [andrew.bray@cmlgroup.ae](mailto:andrew.bray@cmlgroup.ae)  
<http://www.cmlinternational.net>

CML International (Saudi)  
Office No 16 14322 – 3728, 8617 – Al Sulay District,  
Istanbul Street Riyadh KSA  
Tel: +966 5400 53602  
Email: [mark.Hallewell@cmlgroup.ae](mailto:mark.Hallewell@cmlgroup.ae)

CML International Qatar L.L.C  
19<sup>th</sup> Floor, Office 88,  
Al Reem Tower, West Bay, Qatar,  
PO Box: 19530  
Tel: +974 4411 5453  
Fax: +974 4411 5453  
Email: [cmlgroup@emirates.net.ae](mailto:cmlgroup@emirates.net.ae)  
<http://www.cmlinternational.net>

CML International L.L.C (Kazakhstan)  
Office 303, 3<sup>rd</sup> Floor,  
6<sup>th</sup> Saryarka Avenue, Saryarka District  
010000, Astana City  
Republic of Kazakhstan  
Tel: +7 7172 990 440  
Fax: +7 7172 990 449  
Email: [admin@cmlgroup.ae](mailto:admin@cmlgroup.ae)  
<http://www.cmlinternational.net>